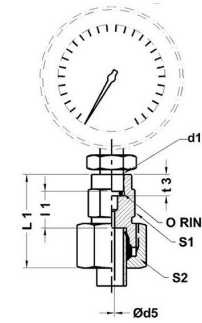
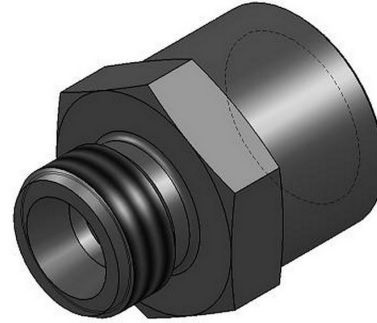




HYDROMATIK
connections par excellence

Metric Bite Type Fittings

MAV - PRESSURE GAUGE ADAPTOR MAV | With DKI Ring



| Part No. | Series | Tube OD | Conn. BSP Thread d1 | d5 | l1 | t3 | S1 | S2 | h |
|-----------|---------------|---------|---------------------|-----|------|------|----|----|-----|
| MAV 06 LR | Light-250 Bar | 6 | 1/4 | 2.5 | 7.5 | 14.5 | 19 | 14 | 4.5 |
| MAV 08 LR | Light-250 Bar | 8 | 1/4 | 5.5 | 7.5 | 14.5 | 19 | 17 | 4.5 |
| MAV 10 LR | Light-250 Bar | 10 | 1/4 | 5.5 | 8.5 | 14.5 | 19 | 19 | 4.5 |
| MAV 12 LR | Light-250 Bar | 12 | 1/4 | 5.5 | 8.5 | 14.5 | 19 | 22 | 4.5 |
| MAV 06 SR | Heavy-630 Bar | 6 | 1/2 | 3.5 | 11 | 20 | 27 | 17 | 5 |
| MAV 08 SR | Heavy-630 Bar | 8 | 1/2 | 3.5 | 11 | 20 | 27 | 19 | 5 |
| MAV 10 SR | Heavy-630 Bar | 10 | 1/2 | 7 | 10.5 | 20 | 27 | 22 | 5 |
| MAV 12 SR | Heavy-630 Bar | 12 | 1/2 | 7 | 10.5 | 20 | 27 | 24 | 5 |

Dimensions given approx. Fig. with tightened nut.

Part No. Given refers to complete assembly - Steel Part