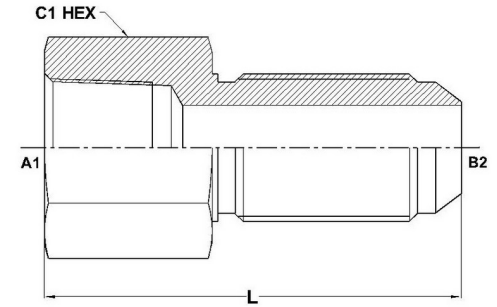
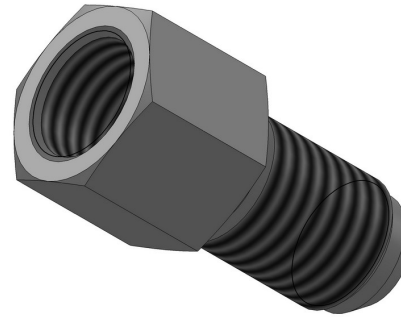




HYDROMATIK
connections par excellence

Tube Fittings & Adapters

FP-MJ Bulkhead Straight 2705 Series |



| PART NO. SIZE | TUBE O.D. | A1 NPTF | B2 SAE 37 | B2 DRILL | L LGTH | C1 HEX |
|---------------|-----------|--------------|-----------|----------|--------|--------|
| 2705-02-04 | 1/4 | 1/8-27 | 7/16-20 | 0.172 | 1.89 | 0.688 |
| 2705-02-05 | 5/16 | 1/8-27 | 1/2-20 | 0.234 | 1.89 | 0.750 |
| 2705-04-04 | 1/4 | 1/4-18 | 7/16-20 | 0.172 | 2.09 | 0.750 |
| 2705-04-06 | 3/8 | 1/4-18 | 9/16-18 | 0.297 | 2.17 | 0.812 |
| 2705-06-06 | 3/8 | 3/8-18 | 9/16-18 | 0.297 | 2.23 | 0.875 |
| 2705-06-08 | 1/2 | 3/8-18 | 3/4-16 | 0.391 | 2.39 | 1.000 |
| 2705-08-06 | 3/8 | 1/2-14 | 9/16-18 | 0.297 | 2.46 | 1.125 |
| 2705-08-08 | 1/2 | 1/2-14 | 3/4-16 | 0.391 | 2.62 | 1.125 |
| 2705-08-10 | 5/8 | 1/2-14 | 7/8-14 | 0.484 | 2.76 | 1.125 |
| 2705-12-12 | 3/4 | 3/4-14 | 1-1/16-12 | 0.609 | 2.99 | 1.375 |
| 2705-12-14 | 7/8 | 3/4-14 | 1-3/16-12 | 0.719 | 2.99 | 1.500 |
| 2705-16-16 | 1 | 1-11-1/2 | 1-5/16-12 | 0.844 | 3.24 | 1.625 |
| 2705-20-20 | 1-1/4 | 1-1/4-11-1/2 | 1-5/8-12 | 1.078 | 3.38 | 2.000 |
| 2705-24-24 | 1-1/2 | 1-1/2-11-1/2 | 1-7/8-12 | 1.312 | 3.40 | 2.375 |

